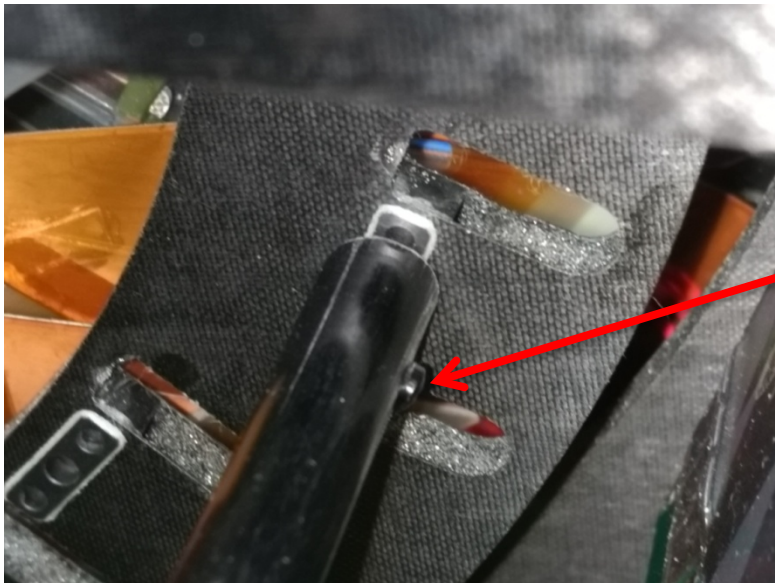


3/8" OD 0.290" ID (0.43" thickness)
Carbon Fiber rod.

Held in place by the same 3mm by
18mm Stainless screw that held the
stave in place.

This is West VTX Detector Only.



Rods are at the 3W00 and 3W07 Locations.
2 total.

Screw goes through center screw hole .

Small plastic set screw used to hold SS
screw in place