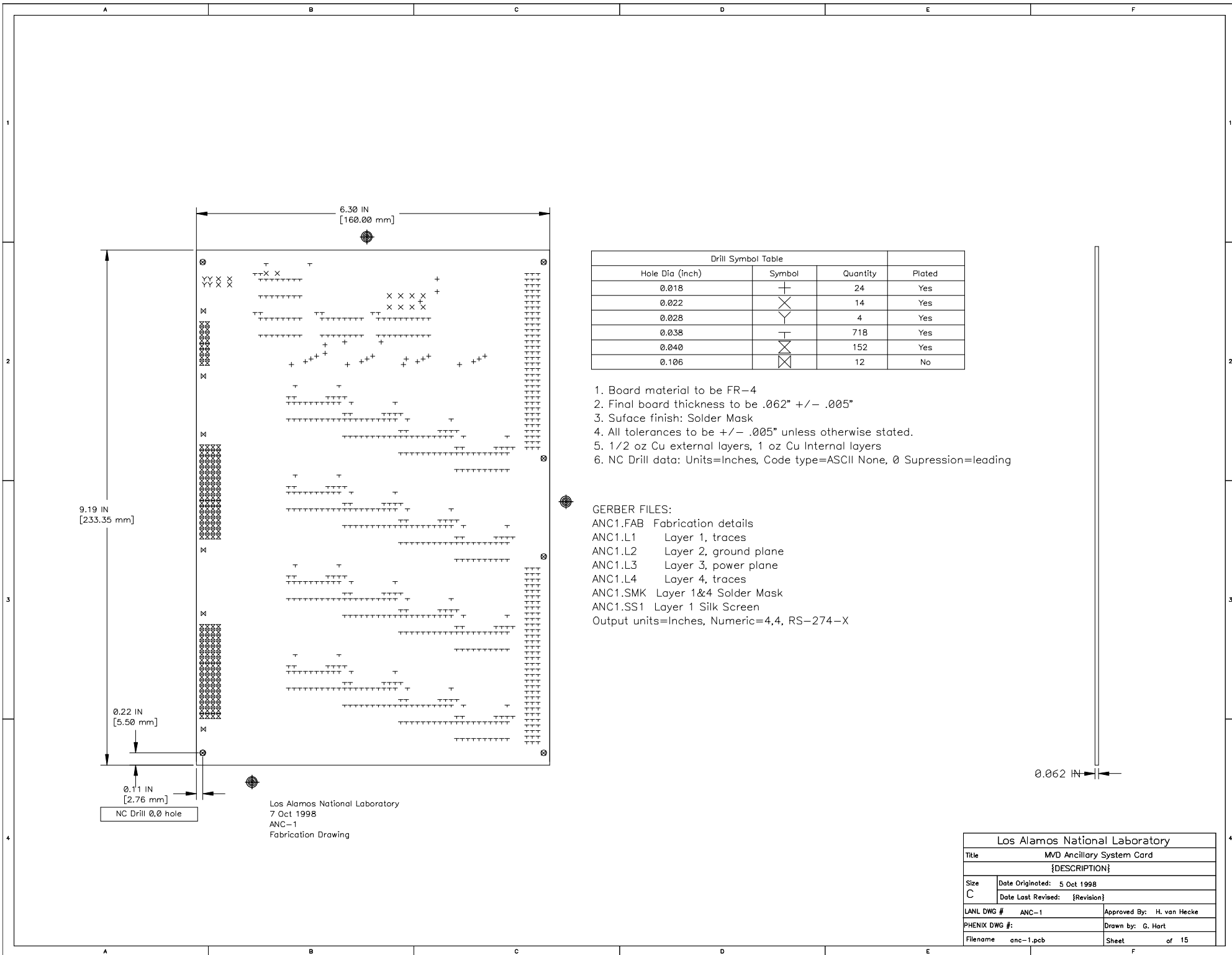


Los Alamos National Laboratory
 19 Nov 1998
 ANC-1
 Layer 2 (Ground Plane) Negative Image

Los Alamos National Laboratory	
Title	MVD Ancillary System Card
{DESCRIPTION}	
Size	Date Originated: 5 Oct 1998
C	Date Last Revised: {Revision}
LANL DWG #	ANC-1
PHENIX DWG #:	Approved By: H. van Hecke
Filename	anc-1.pcb
Sheet	of 15
Drawn by:	G. Hart



Drill Symbol Table			
Hole Dia (inch)	Symbol	Quantity	Plated
0.018	+	24	Yes
0.022	X	14	Yes
0.028	Y	4	Yes
0.038	T	718	Yes
0.040	⊗	152	Yes
0.106	⊗	12	No

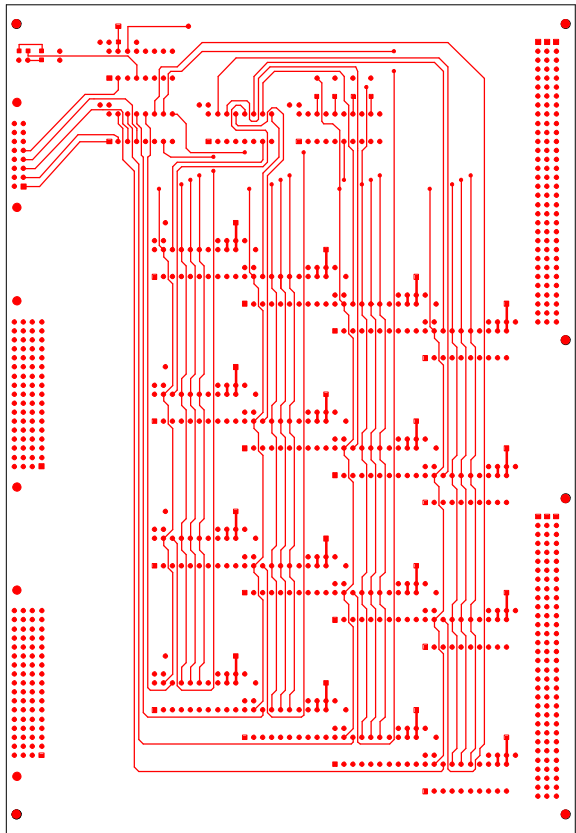
1. Board material to be FR-4
2. Final board thickness to be .062" +/- .005"
3. Surface finish: Solder Mask
4. All tolerances to be +/- .005" unless otherwise stated.
5. 1/2 oz Cu external layers, 1 oz Cu Internal layers
6. NC Drill data: Units=Inches, Code type=ASCII None, 0 Supression=leading

GERBER FILES:

- ANC1.FAB Fabrication details
 - ANC1.L1 Layer 1, traces
 - ANC1.L2 Layer 2, ground plane
 - ANC1.L3 Layer 3, power plane
 - ANC1.L4 Layer 4, traces
 - ANC1.SMK Layer 1&4 Solder Mask
 - ANC1.SS1 Layer 1 Silk Screen
- Output units=Inches, Numeric=4,4, RS-274-X

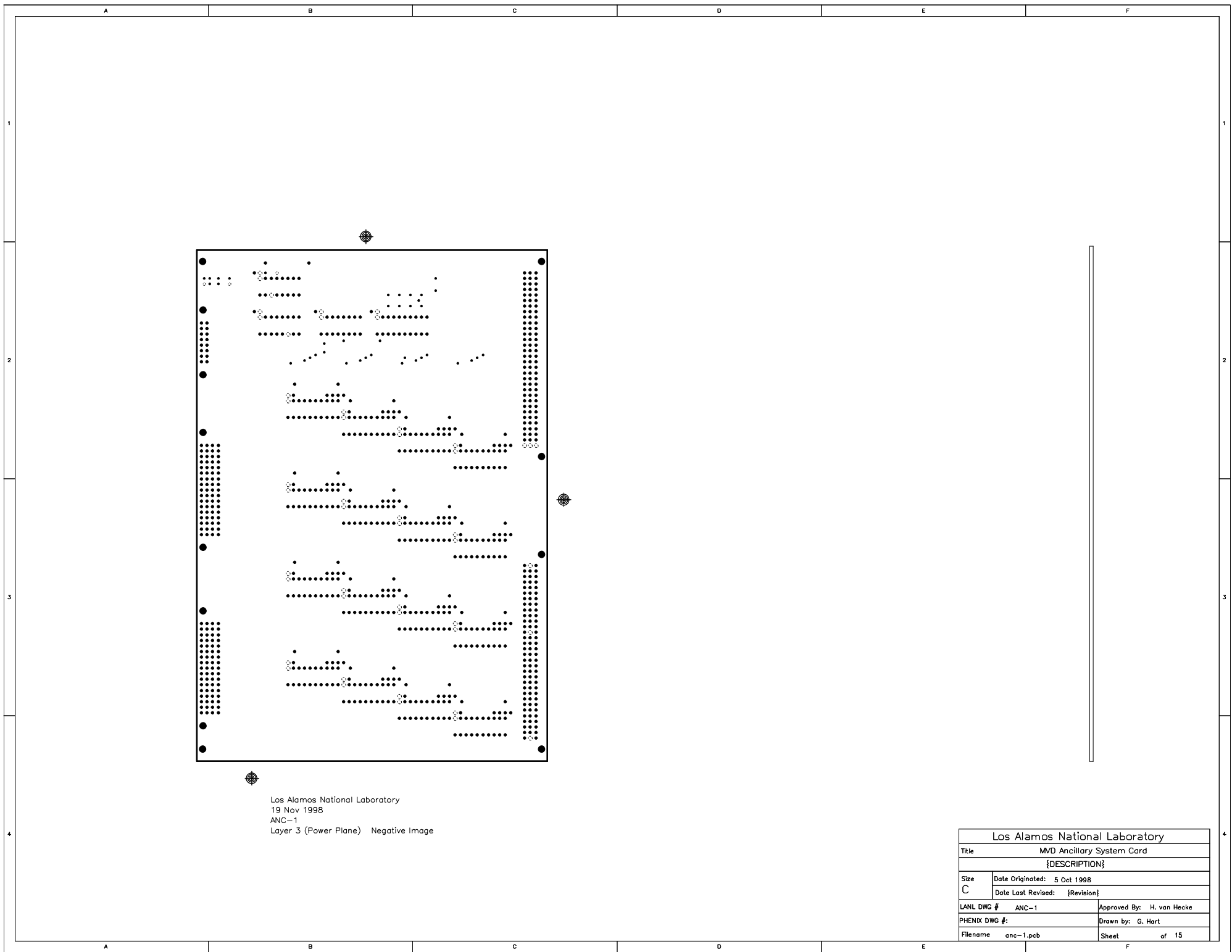
0.062 IN

Los Alamos National Laboratory	
Title	MVD Ancillary System Card
	{DESCRIPTION}
Size	Date Originated: 5 Oct 1998
C	Date Last Revised: {Revision}
LANL DWG #	ANC-1
Approved By:	H. van Hecke
PHENIX DWG #:	Drawn by: G. Hart
Filename	anc-1.pcb
Sheet	of 15



Los Alamos National Laboratory
 7 Oct 1998
 ANC-1
 Layer 4 (Solder side)

Los Alamos National Laboratory	
Title	MVD Ancillary System Card
	{DESCRIPTION}
Size	Date Originated: 5 Oct 1998
C	Date Last Revised: {Revision}
LANL DWG #	ANC-1
PHENIX DWG #:	Approved By: H. van Hecke
Filename	anc-1.pcb
	Drawn by: G. Hart
	Sheet of 15

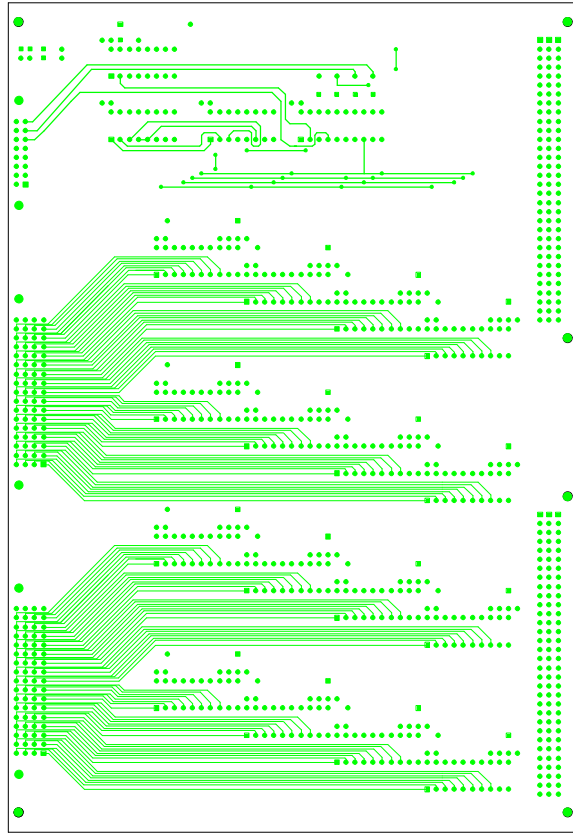


Los Alamos National Laboratory
 19 Nov 1998
 ANC-1
 Layer 3 (Power Plane) Negative Image

Los Alamos National Laboratory	
Title	MVD Ancillary System Card
{DESCRIPTION}	
Size	Date Originated: 5 Oct 1998
C	Date Last Revised: {Revision}
LANL DWG #	ANC-1
PHENIX DWG #:	Approved By: H. van Hecke
Filename	anc-1.pcb
Sheet	of 15
Drawn by:	G. Hart

Revision Note Table

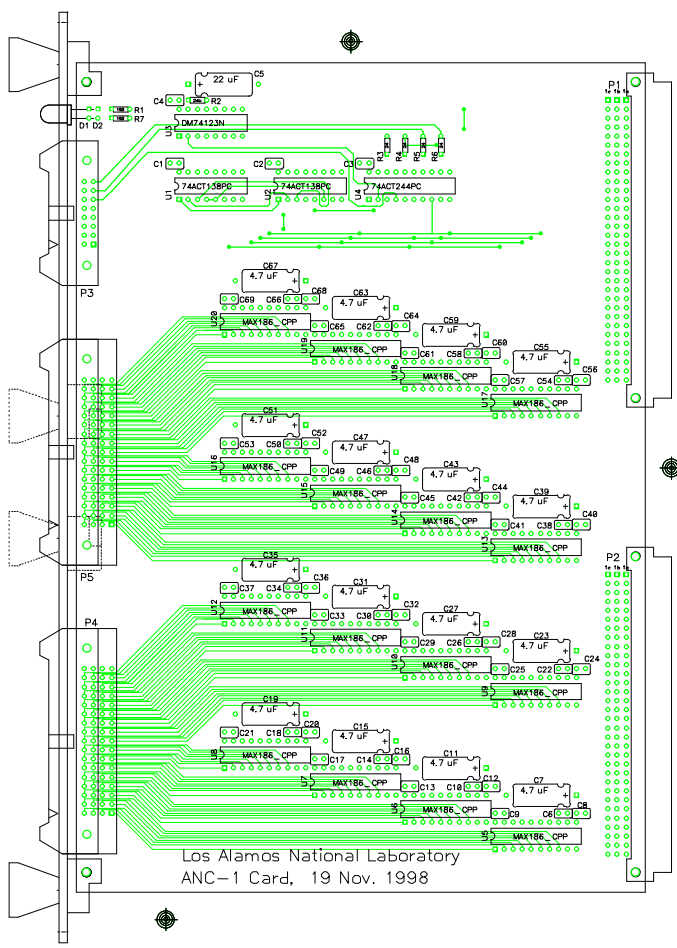
1. Swapped P1 and P2
2. Added vertex to data in line that displayed open on netlist layer. Note: this did not affect electrical connection.
3. Deleted SM4 and made SM1 for both sides



Los Alamos National Laboratory
 7 Oct 1998
 ANC-1
 Layer 1 (Component Side)

Los Alamos National Laboratory			
Title		MVD Ancillary System Card	
{DESCRIPTION}			
Size C	Date Originated:	5 Oct 1998	
	Date Last Revised:	{Revision}	
LANL DWG #	ANC-1	Approved By:	H. van Hecke
PHENIX DWG #:		Drawn by:	G. Hart
Filename	anc-1.pcb	Sheet	of 15

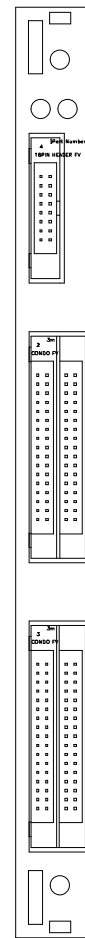
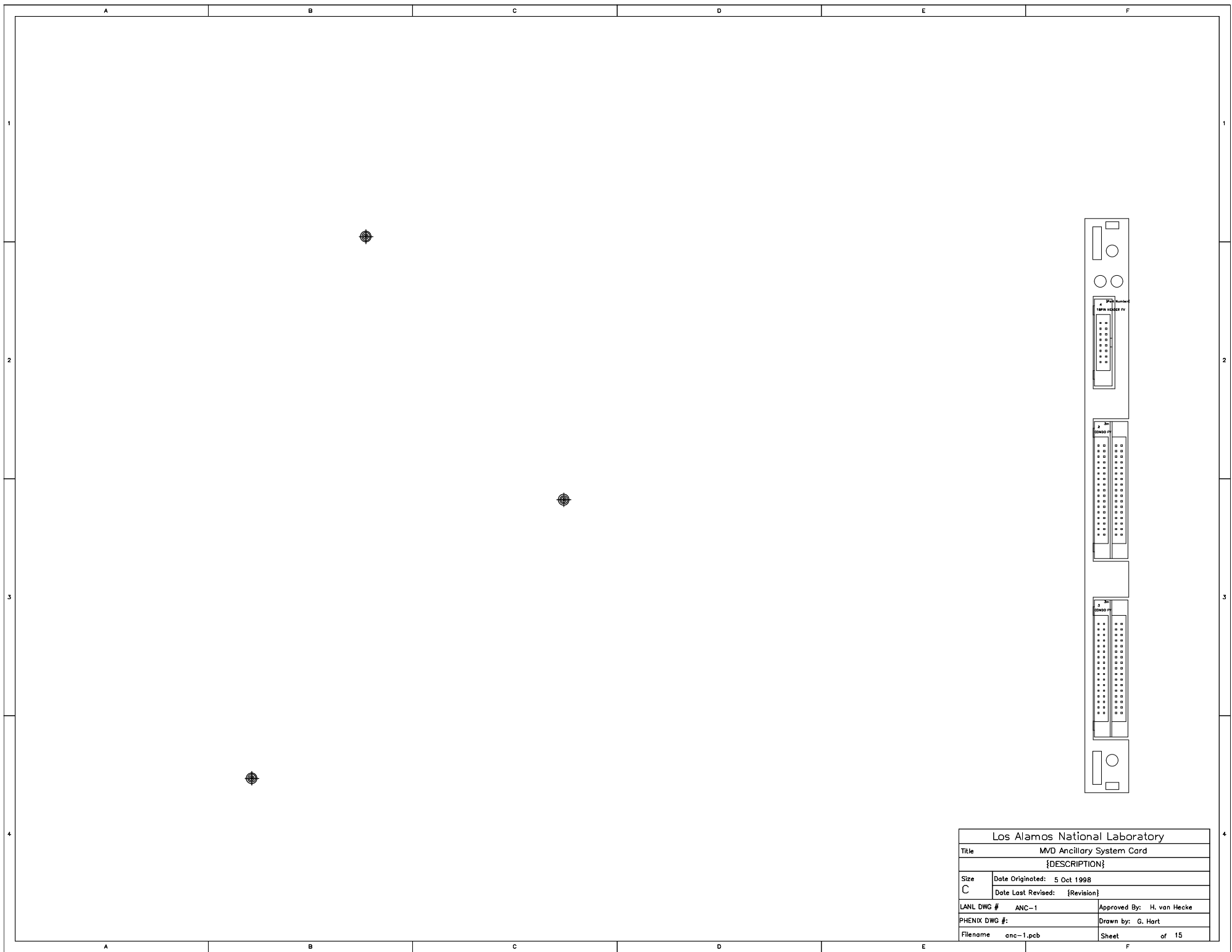
1. Swapped P1 and P2
2. Added vertex to data in line that displayed open on netlist layer. Note: this did not affect electrical connection.
3. Deleted SM4 and made SM1 for both sides



Los Alamos National Laboratory
ANC-1 Card, 19 Nov. 1998

Los Alamos National Laboratory,
19 Nov 1998
ANC-11
Silkscreen Layer (Component Side)

Los Alamos National Laboratory	
Title	MVD Ancillary System Card
{DESCRIPTION}	
Size	Date Originated: 5 Oct 1998
C	Date Last Revised: {Revision}
LANL DWG #	ANC-1
Approved By:	H. van Hecke
PHENIX DWG #:	Drawn by: G. Hart
Filename	anc-1.pcb
Sheet	of 15



Los Alamos National Laboratory	
Title	MVD Ancillary System Cord
{DESCRIPTION}	
Size	Date Originated: 5 Oct 1998
C	Date Last Revised: {Revision}
LANL DWG #	ANC-1
PHENIX DWG #:	Approved By: H. van Hecke
Filename	anc-1.pcb
	Drawn by: G. Hart
	Sheet of 15