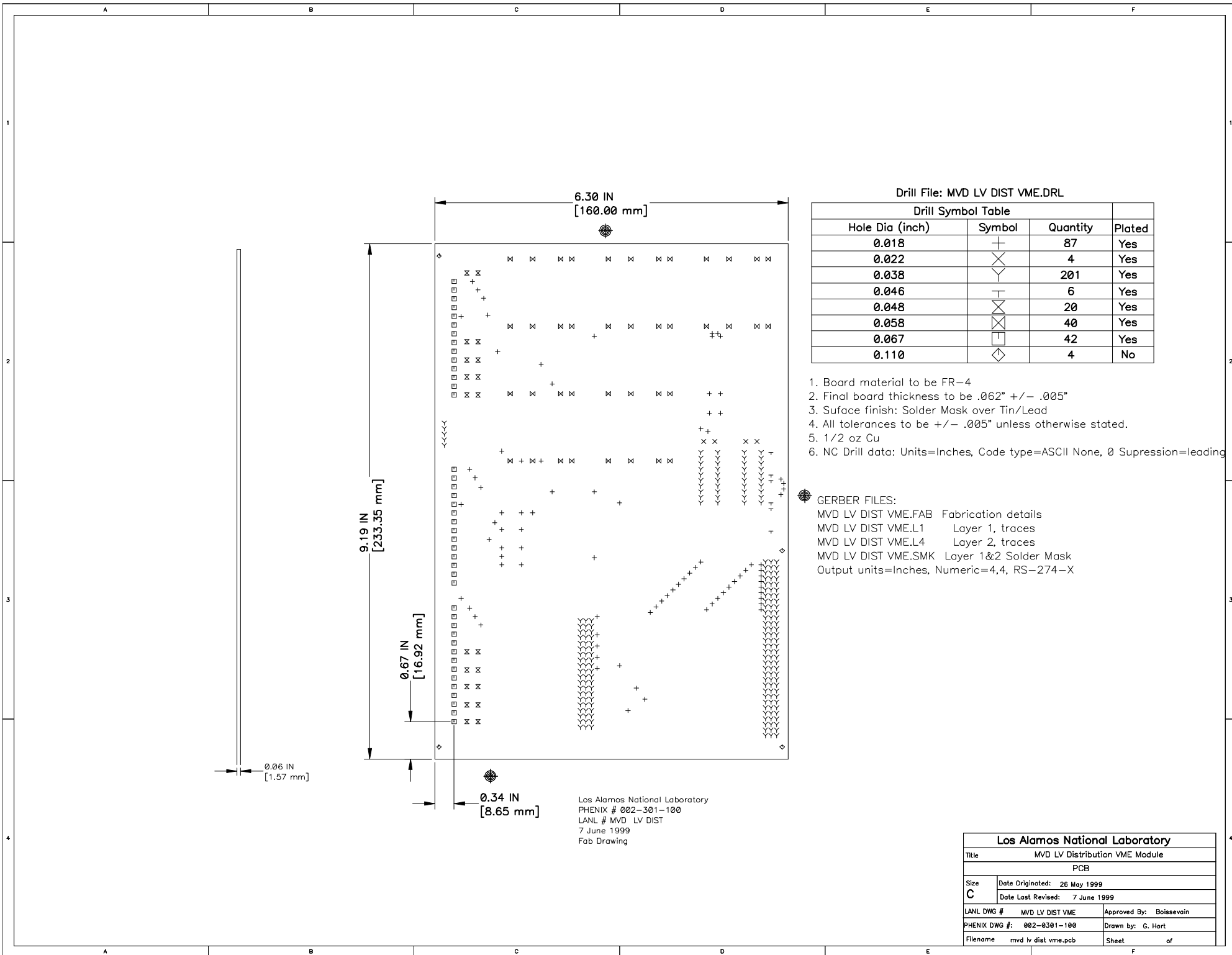


Los Alamos National Laboratory
 PHENIX # 002-301-100
 LANL # MVD LV DIST
 7 June 1999
 Bottom Side, Layer 2

Los Alamos National Laboratory		
Title MVD LV Distribution VME Module		
PCB		
Size	Date Originated: 26 May 1999	
C	Date Last Revised: 7 June 1999	
LANL DWG #	MVD LV DIST VME	Approved By: Boissevain
PHENIX DWG #:	002-0301-100	Drawn by: G. Hart
Filename	mvd lv dist vme.pcb	Sheet of



Drill File: MVD LV DIST VME.DRL

Drill Symbol Table			
Hole Dia (inch)	Symbol	Quantity	Plated
0.018	+	87	Yes
0.022	⊗	4	Yes
0.038	Y	201	Yes
0.046	T	6	Yes
0.048	⊗	20	Yes
0.058	⊗	40	Yes
0.067	□	42	Yes
0.110	◇	4	No

1. Board material to be FR-4
2. Final board thickness to be .062" +/- .005"
3. Surface finish: Solder Mask over Tin/Lead
4. All tolerances to be +/- .005" unless otherwise stated.
5. 1/2 oz Cu
6. NC Drill data: Units=Inches, Code type=ASCII None, 0 Supression=leading

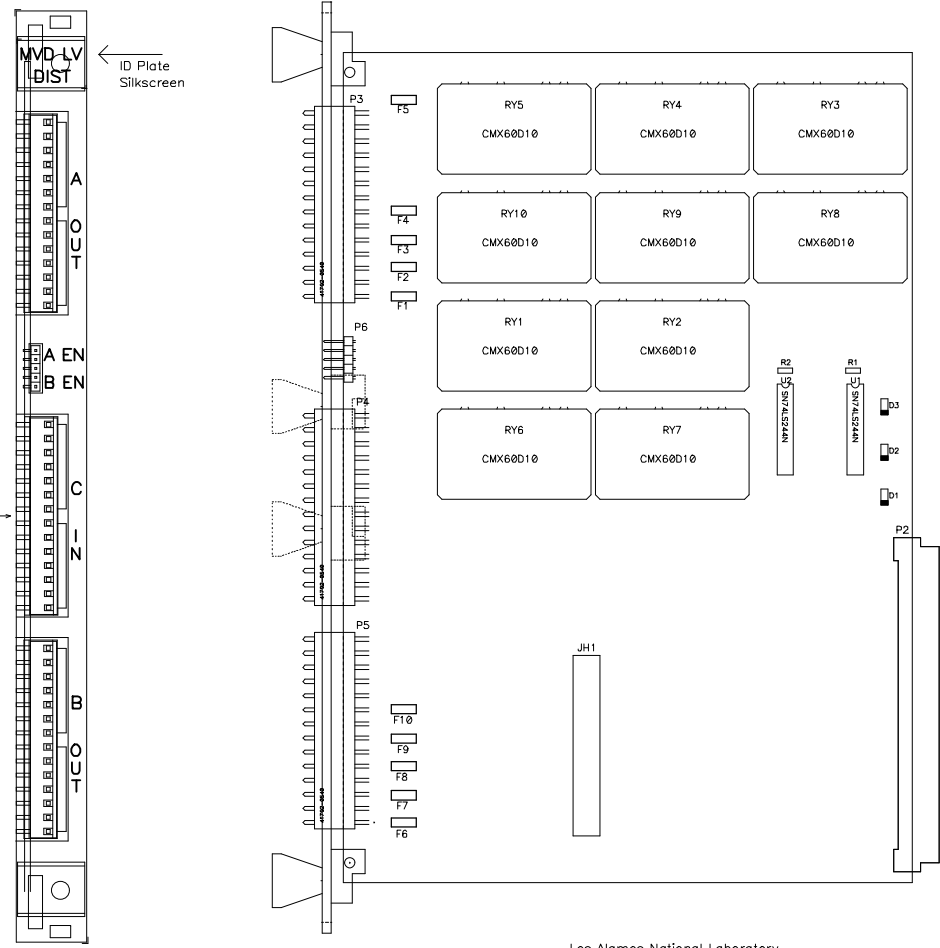
GERBER FILES:
MVD LV DIST VME.FAB Fabrication details
MVD LV DIST VME.L1 Layer 1, traces
MVD LV DIST VME.L4 Layer 2, traces
MVD LV DIST VME.SMK Layer 1&2 Solder Mask
Output units=Inches, Numeric=4,4, RS-274-X

Los Alamos National Laboratory		
Title	MVD LV Distribution VME Module	
	PCB	
Size	Date Originated: 26 May 1999	
C	Date Last Revised: 7 June 1999	
LANL DWG #	MVD LV DIST VME	Approved By: Boissevain
PHENIX DWG #:	002-0301-100	Drawn by: G. Hart
Filename	mvd lv dist vme.pcb	Sheet of

ITEM	REF #	QTY	MANUFACTURER	DESCRIPTION	PART #
1	P2	1	ITT-Canon	96 pin DIN RA, rows a & c filled	905-72205E
2	P3-5	1	Molex	Header, Right Angle, .156" pitch, 14 pin	41792-0540
3	P6	1	Samtec	Header, Right Angle, 5 pin	TSW-105-08-S-S-RA
4	JH1	1	SAMTEC	Header, 3 row x 20 pin (60 total)	TSW-120-07-G-T
5		1	SAMTEC	Jumper, 20 pair	MNT-120-BK-G
6	RY1-10	7	Crydom	SS Relay, 10 amp	CMX60D10
7	R1-2	2		Resistor, 1/8 w, 10 k	
8	D1-3	3	Motorola	Diode, 1 amp, 600V	1N4005
9	F1-10	10	Raychem	Resettable Fuse, 3 Amp	RGE300

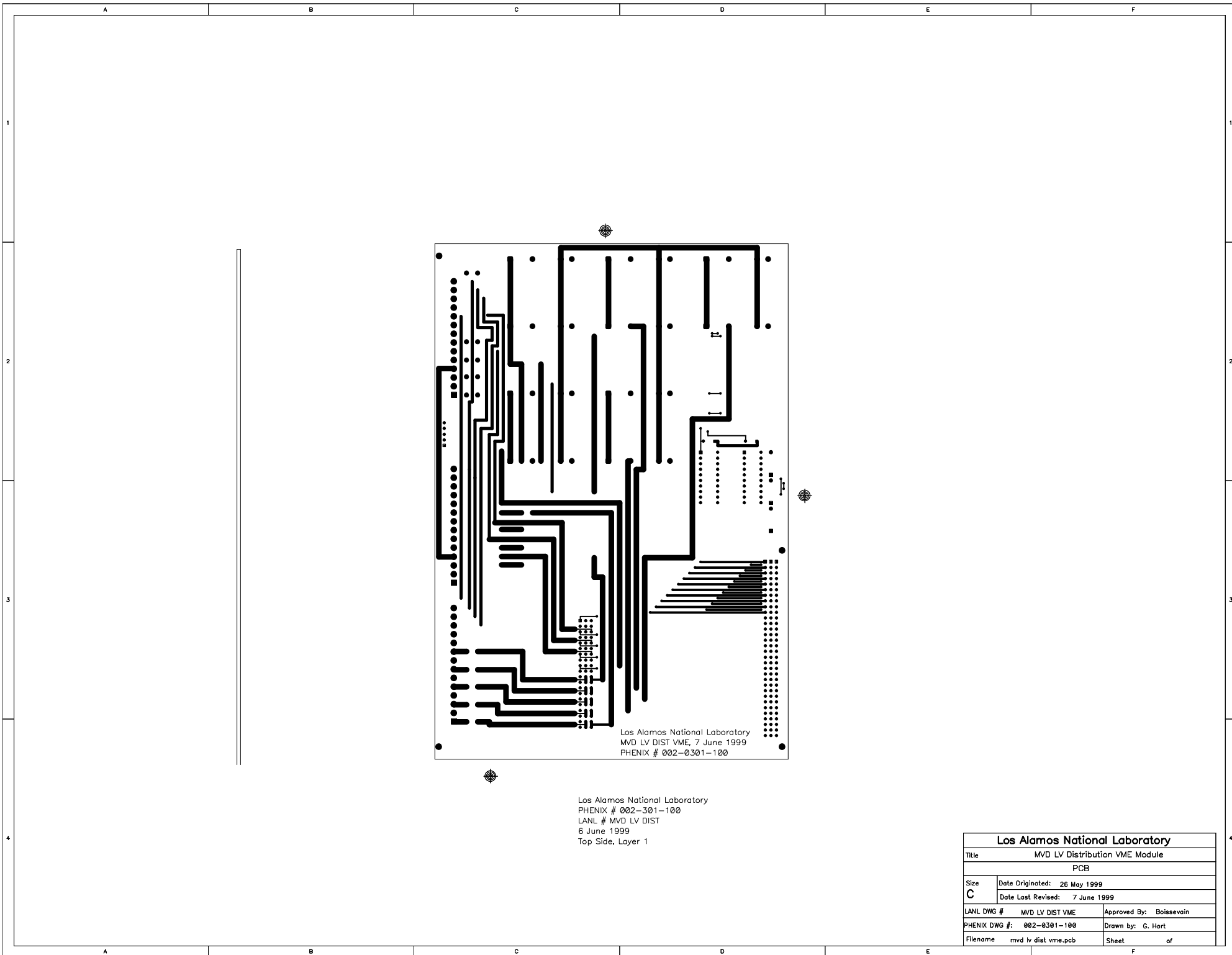
10 mil width traces with 1/2 Oz plating = 6 amps
 10 mil width traces with 1 Oz plating = 12 amps
 20 mil width traces with 1/2 Oz plating = 12 amps

Los Alamos National Laboratory
 PHENIX # 002-301-100
 LANL # MVD LV DIST
 ID Plate Silkscreen
 Gregory Hart 505-665-0365
 ghart@lanl.gov
 Los Alamos National Laboratory
 PHENIX # 002-301-100
 LANL # MVD LV DIST
 Front Panel Silkscreen
 Gregory Hart 505-665-0365
 ghart@lanl.gov



Los Alamos National Laboratory
 PHENIX # 002-301-100
 LANL # MVD LV DIST VME
 7 June 1999
 Assembly Drawing

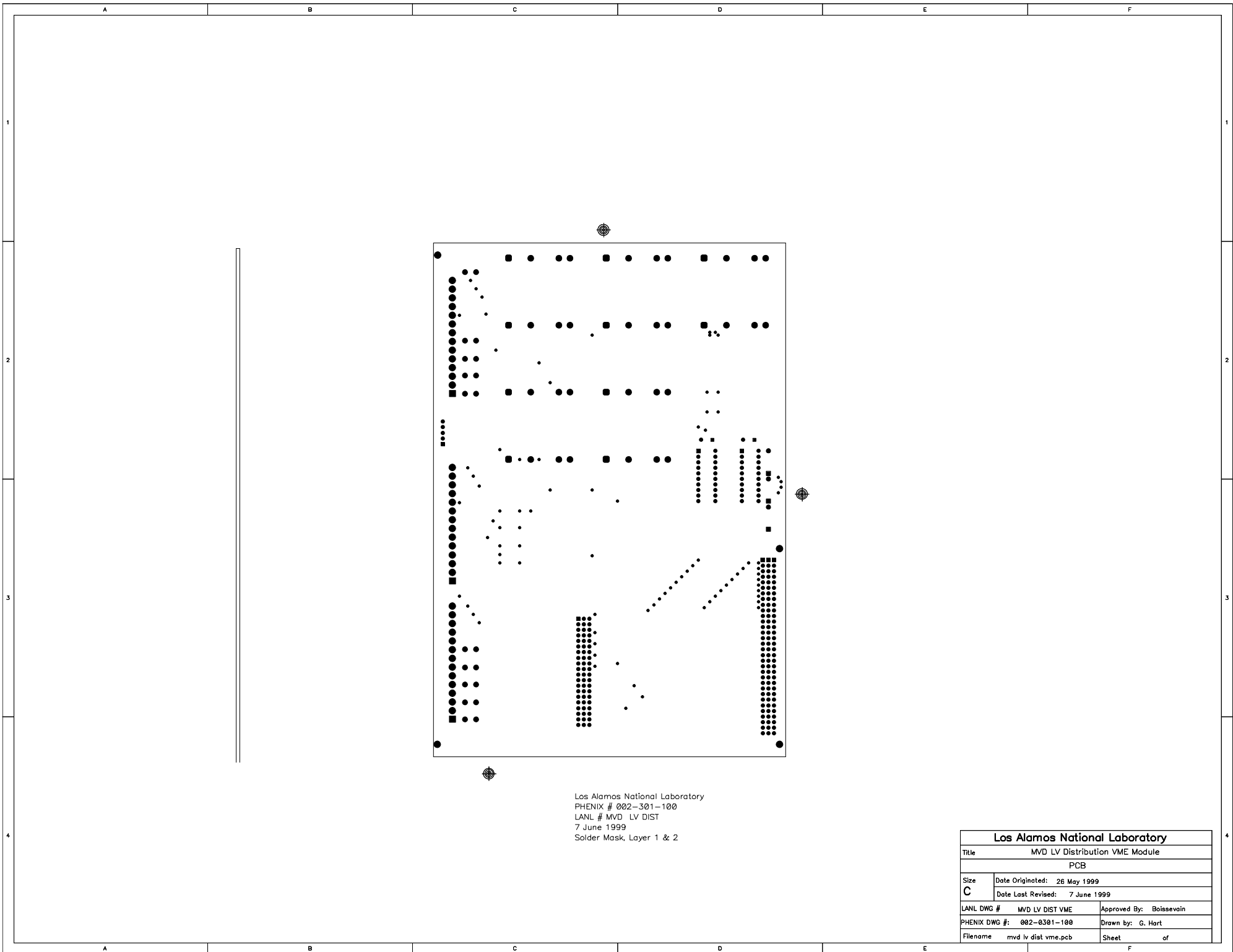
Los Alamos National Laboratory		
Title	MVD LV Distribution VME Module	
	PCB	
Size	Date Originated: 26 May 1999	
C	Date Last Revised: 7 June 1999	
LANL DWG #	MVD LV DIST VME	Approved By: Bolassevain
PHENIX DWG #:	002-0301-100	Drawn by: G. Hart
Filename	mvd lv dist vme.pcb	Sheet of



Los Alamos National Laboratory
MVD LV DIST VME, 7 June 1999
PHENIX # 002-0301-100

Los Alamos National Laboratory
PHENIX # 002-301-100
LANL # MVD LV DIST
6 June 1999
Top Side, Layer 1

Los Alamos National Laboratory		
Title MVD LV Distribution VME Module		
PCB		
Size C	Date Originated: 26 May 1999	Approved By: Boissevain
	Date Last Revised: 7 June 1999	
LANL DWG #	MVD LV DIST VME	Drawn by: G. Hart
PHENIX DWG #:	002-0301-100	Sheet of
Filename	mvd lv dist vme.pcb	



Los Alamos National Laboratory
 PHENIX # 002-301-100
 LANL # MVD LV DIST
 7 June 1999
 Solder Mask, Layer 1 & 2

Los Alamos National Laboratory		
Title		MVD LV Distribution VME Module
PCB		
Size C	Date Originated:	26 May 1999
	Date Last Revised:	7 June 1999
LANL DWG #	MVD LV DIST VME	Approved By: Boissevain
PHENIX DWG #:	002-0301-100	Drawn by: G. Hart
Filename	mvd lv dist vme.pcb	Sheet of